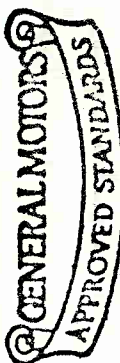
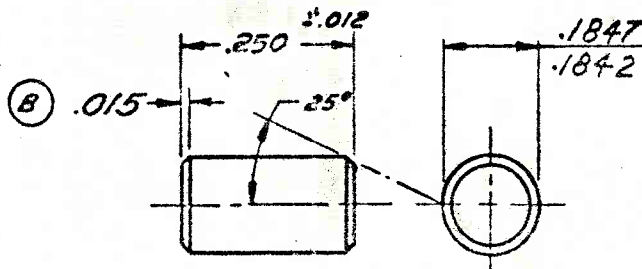


141342

DETROIT, MICHIGAN



STANDARDS SECTION



APPROVED DATE:  
*W. K. Krenack*  
 7-27-74

(A)

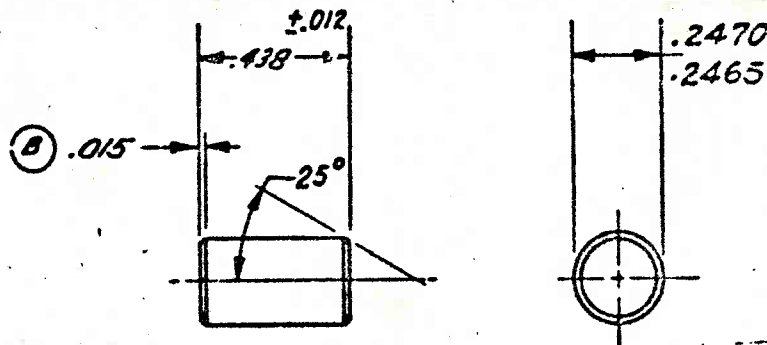
RECOMMENDED HOLE SIZE  $\frac{.1825}{.1840}$   
 MUST CONFORM TO GENERAL SPECIFICATIONS  
 FOR PINS PUBLISHED IN G.M. STANDARDS.  
 TOLERANCE  $\pm .019$  UNLESS OTHERWISE SPECIFIED.

				DESCRIPTION $\frac{3}{16} \times \frac{1}{4}$	FINISH PLAIN	MATERIAL G.M. 4061-M BRASS 1/2 HARD
3-11-57	B	DIM. WAS 1/64	B.G.			
6-5-53	A	HOLE SIZE ADDED	S.S.	NAME		
6-19-47		REVISED TO NEW ENG. STDS.	C.F.J.			
9-26-44		RELEASED				
DATE	LET.	RECORD	BY	DOWEL PIN		141342

MATERIAL

GENERAL MOTORS ENGINEERING STANDARDS  
DETROIT 2, MICHIGAN

141192



APPROVED FOR ISSUE  
*V. Kuznetsov*  
7-29-46  
DESIGN OFFICE

(A)  
RECOMMENDED HOLE SIZE .2447  
.2462  
MUST CONFORM TO GENERAL SPECIFICATIONS  
PUBLISHED IN G. M. ENGINEERING STANDARDS.  
TOLERANCE ± .010 UNLESS OTHERWISE SPECIFIED

DATE	LET.	RECORD	BY	DESCRIPTION	FINISH	MATERIAL
7-1-61	C	MATERIAL REVISED	JM	1/4 x 7/16 DOWEL PIN	PLAIN	STEEL - SEE NOTE (C)
3-11-57	B	DIM. WAS 1/64	B.G.			
3-7-51	A	NOTE ADDED	G.L.			
10-14-46		RELEASED	DAW			
						141192

